

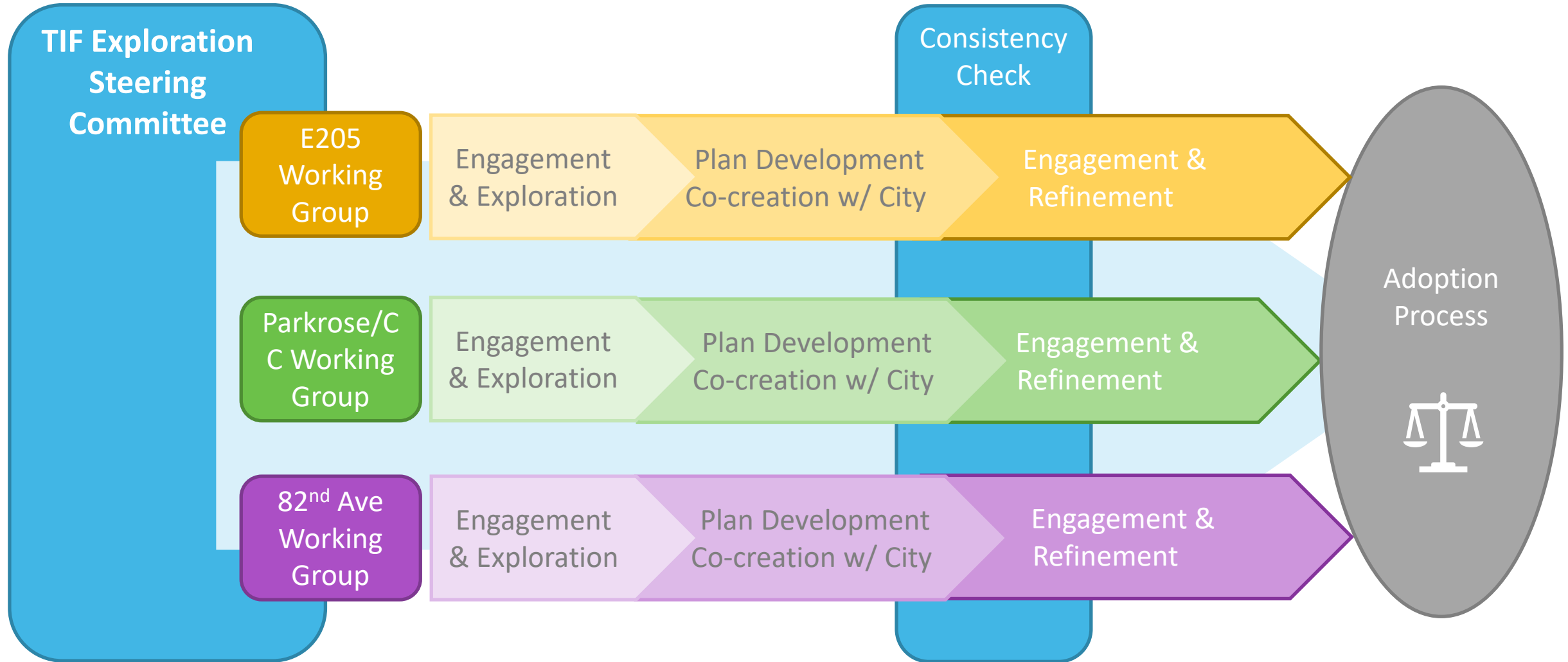
East Portland TIF Exploration *SE Uplift*

June 17, 2024



Portland
Housing
Bureau

TIF District Plan Development Process

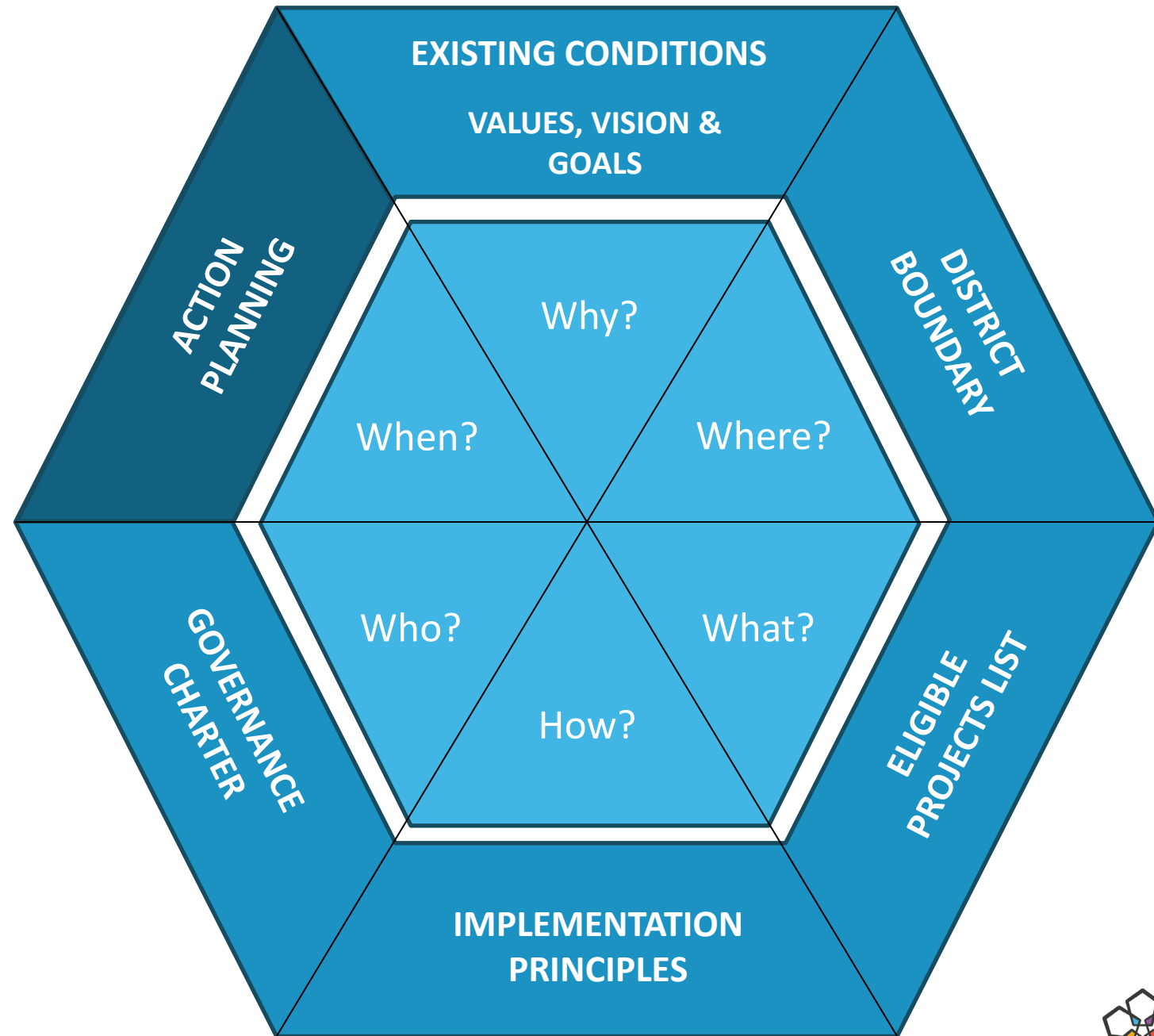


At any phase in the process, the Working Group may choose to not move forward



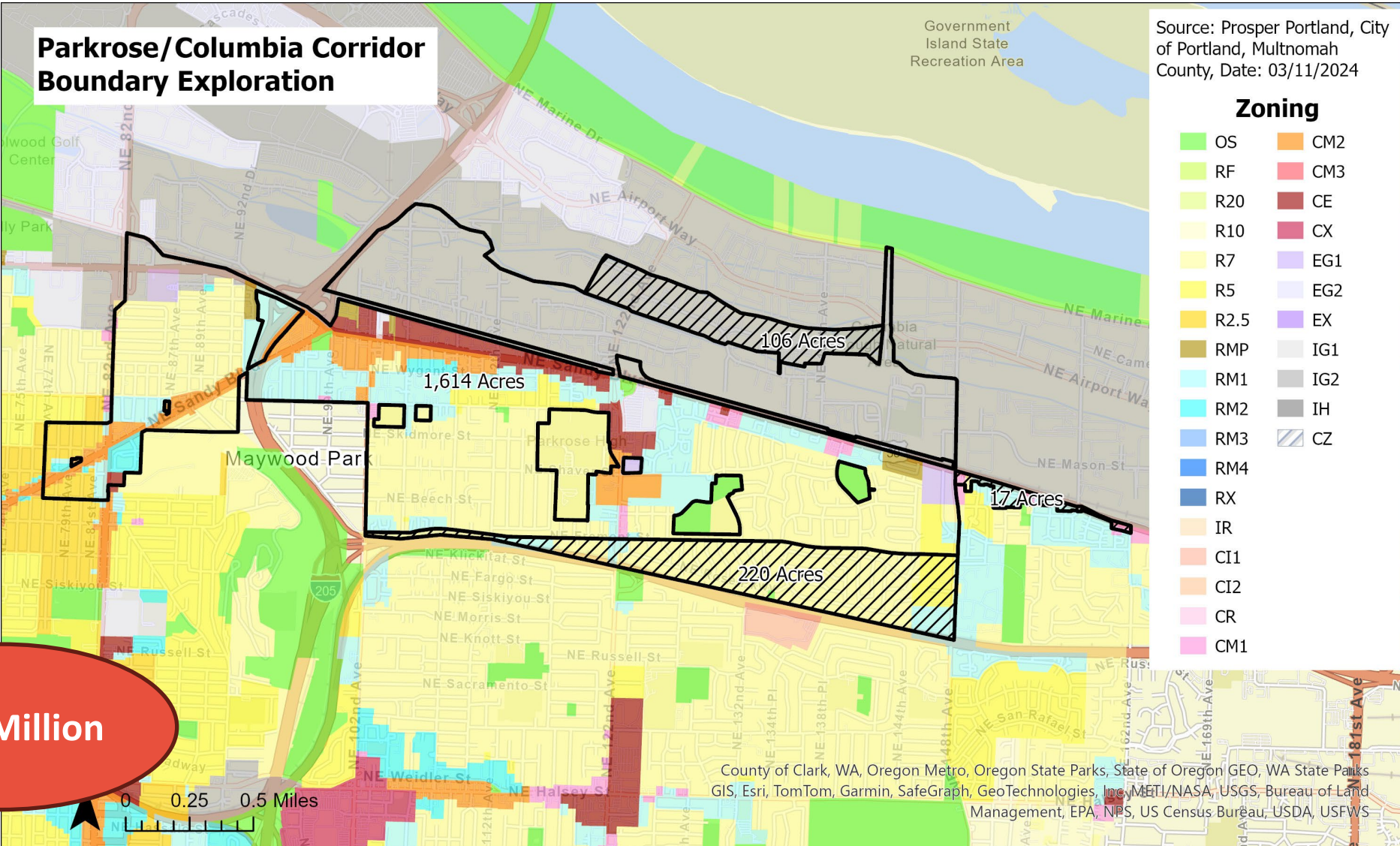
Main Pieces of a TIF District Plan

*What are
discussions
focused on?*



Draft District Boundaries

Current Draft Boundary – Parkrose/Columbia Corridor



Portland Housing Bureau



PROSPER PORTLAND

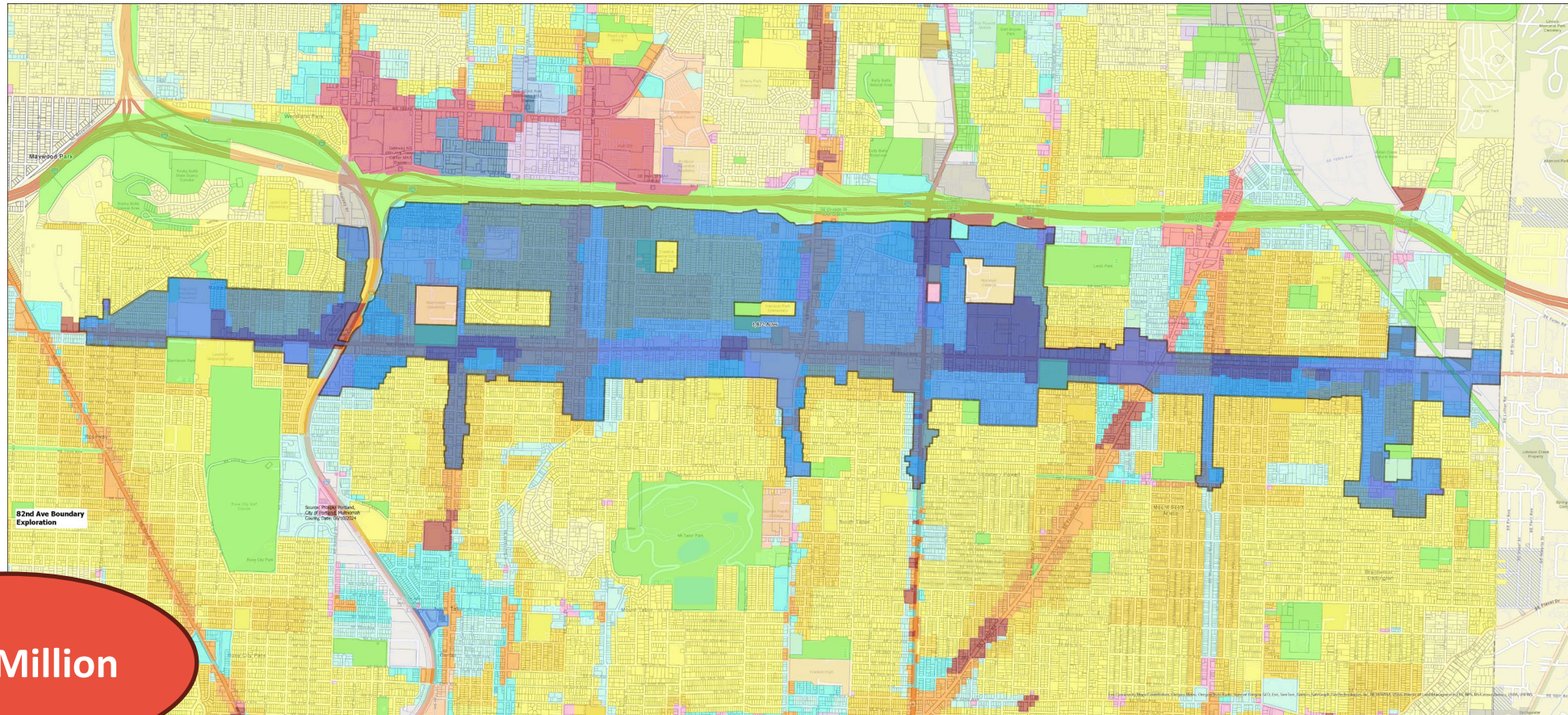
Current Draft Boundary – 82nd Avenue



**Portland
Housing Bureau**



**PROSPER
PORTLAND**



\$450 Million

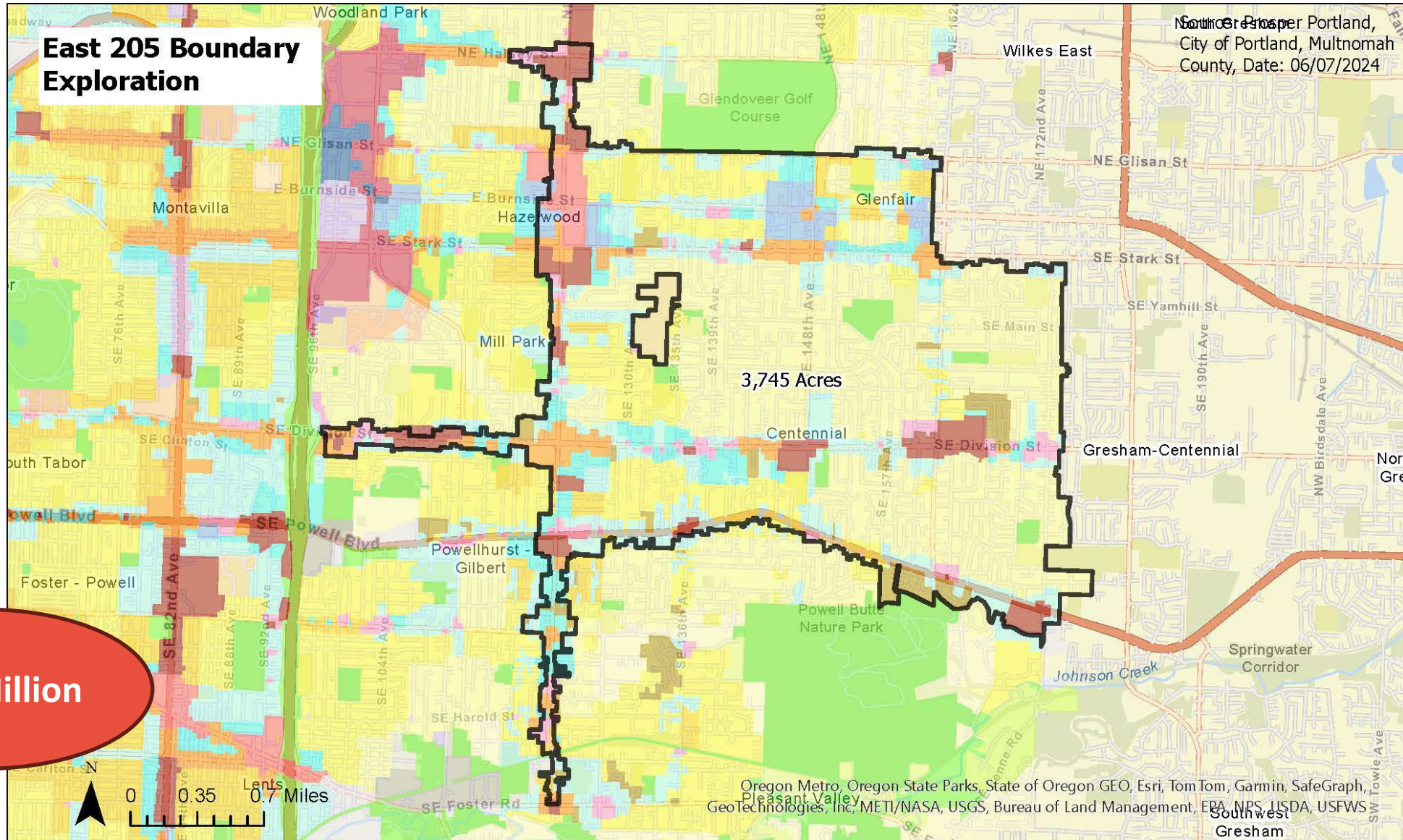
Current Draft Boundary - E205



Portland
Housing Bureau



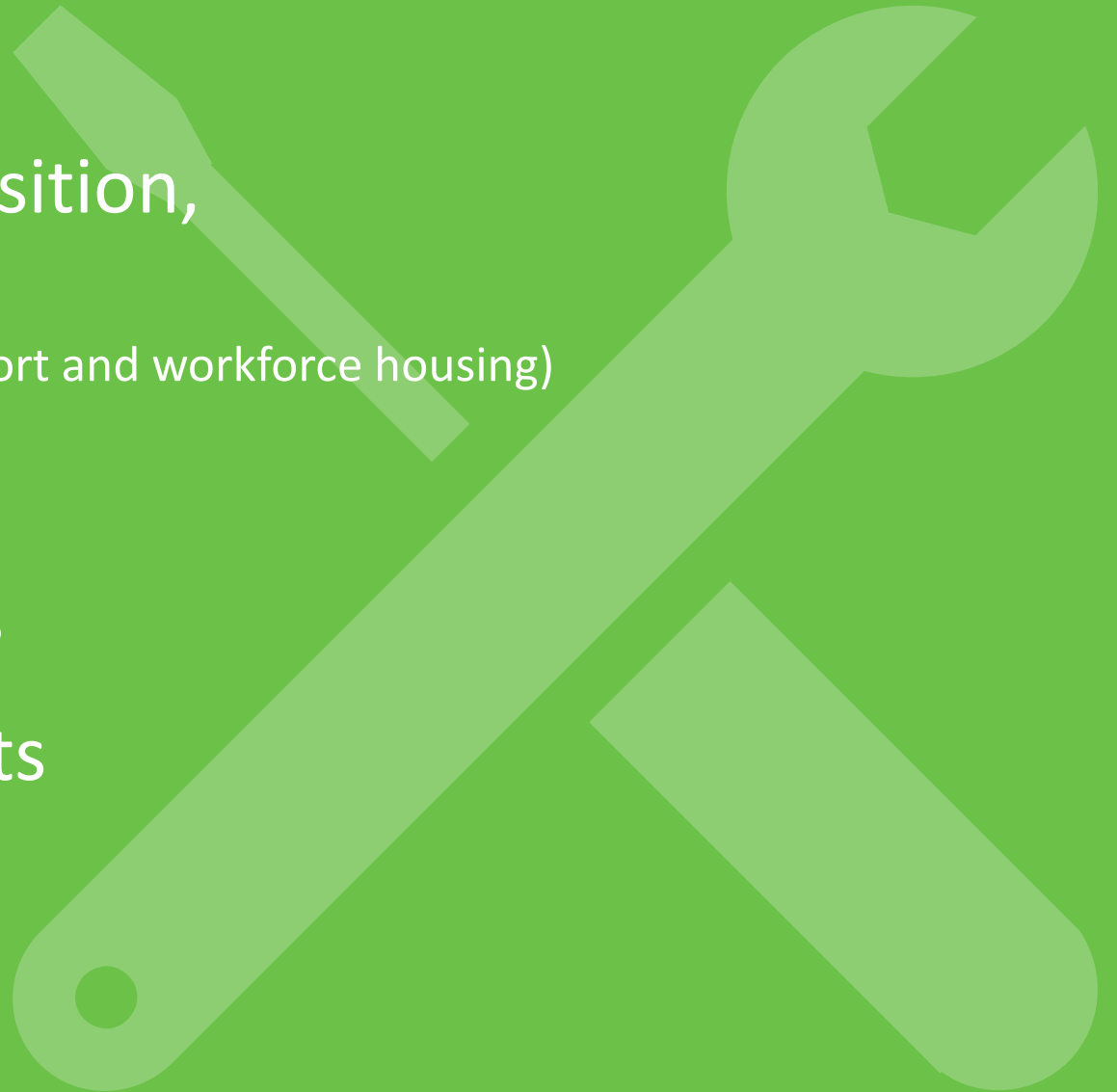
PROSPER
PORTLAND



Eligible Project Lists

Stabilization-Focused Eligible Projects List

- A. Affordable Housing
- B. Commercial Property Acquisition,
Development & Renovation
(includes land banking, small business support and workforce housing)
- C. Arts, Culture and Signage
- D. Recreational Improvements
- E. Infrastructure Improvements



Priorities (from 82nd Avenue Exploration)

Affordable Housing

Down Payment Assistance
Affordable Apartments Near Transit/Nodes
Need Family-sized, Multi-generational opportunities

Commercial/Economic Development

Workforce Housing
Grocery Stores
Affordable Retail Space, Daycare
Credit Union
Physical & Mental Health

Recreation

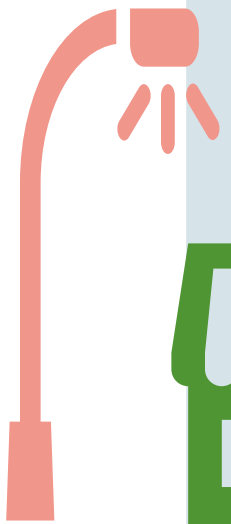
Community Centers
Free youth courts, fields
Public Restrooms

Infrastructure

Pedestrian-scale lighting
Targeted Sidewalk, Street, Trail Improvements

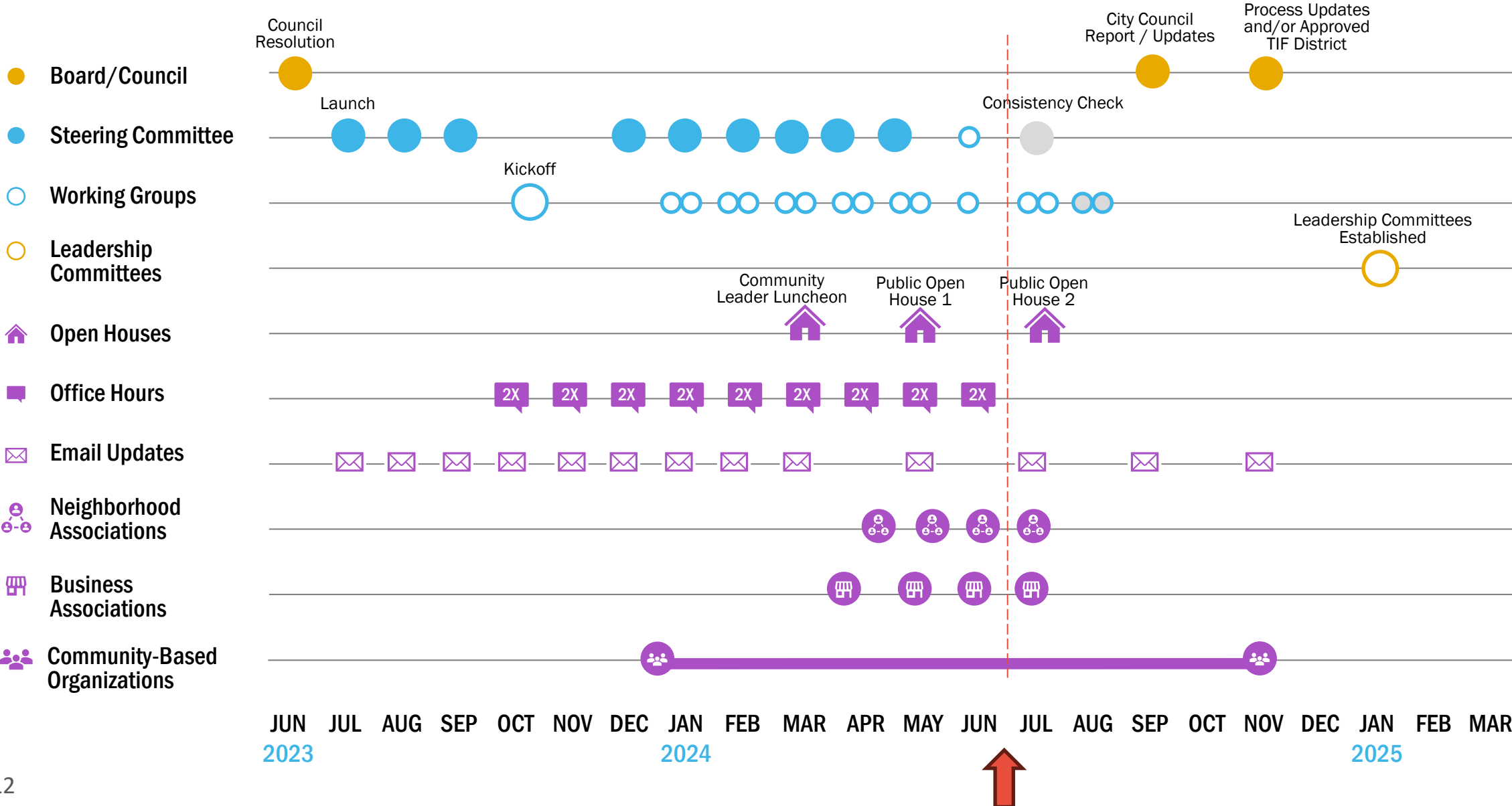
Arts, Culture & Signage

Performance Spaces, Multi-cultural
Public Art Space



Community Input & Engagement

East Portland TIF Exploration Timeline



Major Themes So Far: Broad Perspectives

Support

- Investments that benefit those who have been harmed by urban renewal, displaced, or are vulnerable to displacement
- Investments to help implement existing community plans and coordinating/leveraging resources
- More affordable and additional housing opportunities
- Support for businesses and entrepreneurs and economic opportunities/mobility
- Spaces for community to gather and placemaking that leads to community pride/sense
- Investments that create safer, accessible, healthier, climate resilient communities
- Investments that keep CBOs in community
- Investments to keep current residents in their communities

Major Themes So Far: Broad Perspectives

Opposition

- Skepticism of this tool and history of urban renewal
- Concerns about being displaced
- Desire for more community control
- Concerns around timeline and feeling rushed
- Potential impacts to schools and/or other services
- Lack of faith in government agencies to implement
- Concerns about inflation

Major Themes So Far: Broad Perspectives

Curiosity

- Need for more accessible information on the basics of this tool and how it works
- Understanding how this will be implemented, who would receive dollars, lessons learned, who selects projects, criteria used, etc.
- How will TIF impact property owners (private, nonprofit) and support redevelopment
- How will the City maintain outreach and engagement to ensure people are aware of resources they can access
- How to get the City to invest other resources in East Portland
- How to keep youth connected
- A lot of contextual questions that really get at "how can this support me, my family, my community?"

Where are we right now?





Roger Gonzalez, Prosper Portland
Parkrose/Columbia Corridor Lead



Dana DeKlyen, Prosper Portland
E205 Lead



Kathryn Hartinger, Prosper Portland
82nd Avenue Lead



Paula Byrd, Rosewood Initiative
Community Project Manager



Kiana Ballo, Prosper Portland
TIF Exploration Coordinator

Raul Preciado Mendez, Portland Housing Bureau
E205, Parkrose/Columbia Corridor Lead



Jessica Conner, Portland Housing Bureau
82nd Avenue, Central City Lead

For More Information:

www.prosperportland.us/eastpdx

Email the team:

EastPortlandTIF@prosperportland.us

Contact the Community Project Manager:

Paula@rosewoodinitiative.org



**Portland
Housing Bureau**

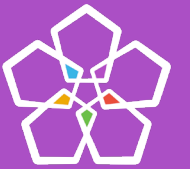


**PROSPER
PORTLAND**

Building an Equitable Economy

Questions?

This is your footer



PROSPER
PORTLAND

Building an Equitable Economy